



MONTHLY MEMBERSHIP PROGRESS REPORT

District 2 X1

Results as of: 5/31/2017

GMT: HAL GRIFFIN

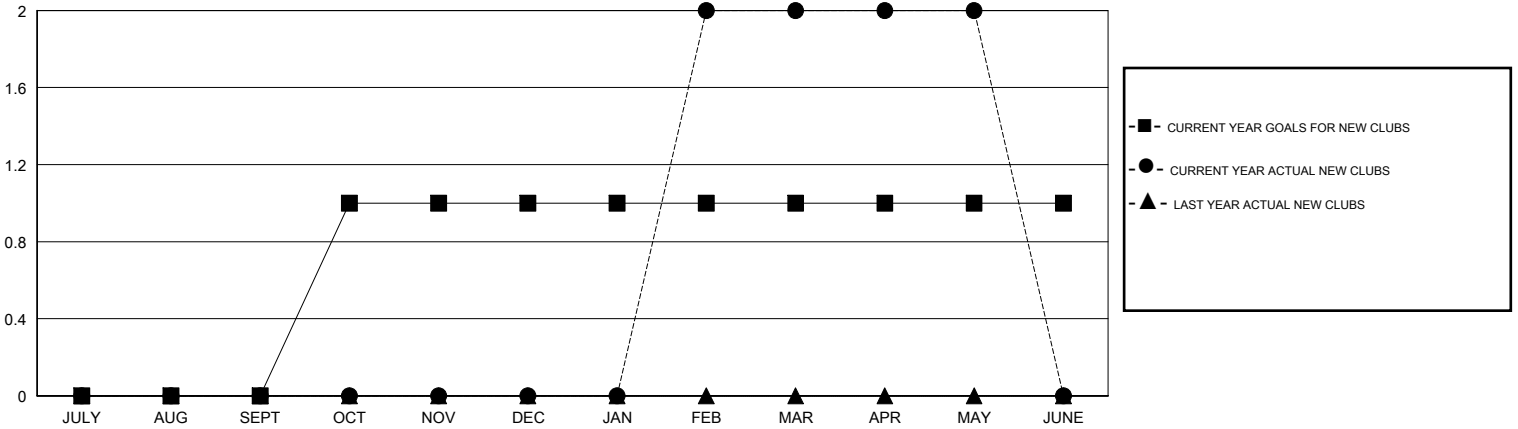
LOCATION TEXAS

GMT CA

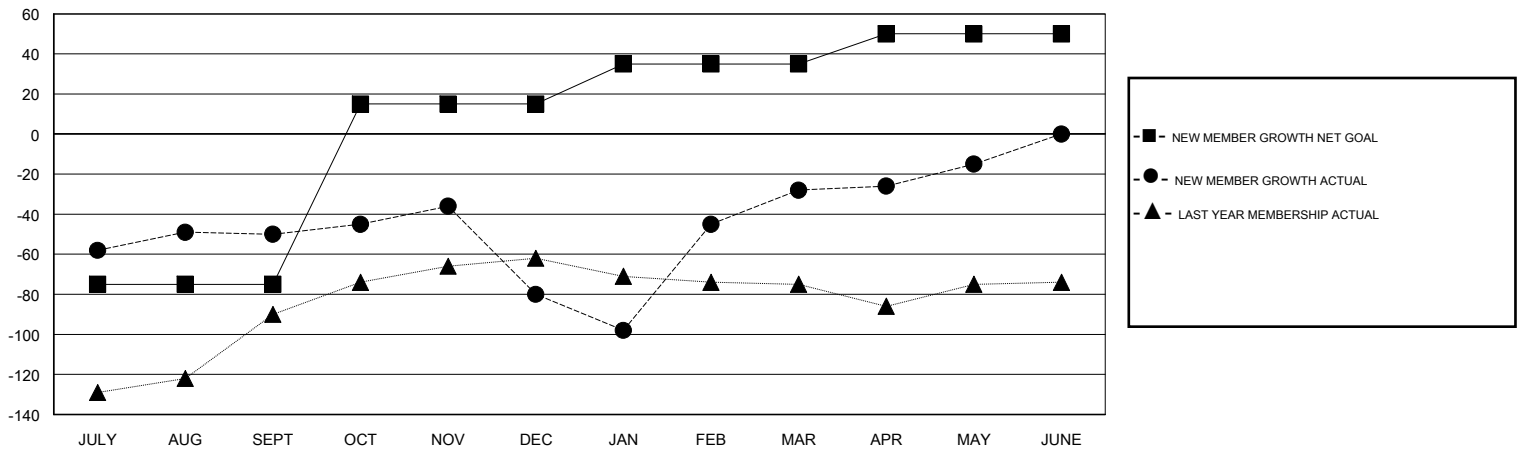
| Clubs | | | |
|-----------------------|---------------|-----------|---------------|
| RESULTS FOR 2016-2017 | | | |
| QUARTER | NEW CLUB GOAL | NEW CLUBS | DROPPED CLUBS |
| JULY/AUG/SEPT | 0 | 0 | 0 |
| OCT/NOV/DEC | 1 | 0 | 1 |
| JAN/FEB/MAR | 0 | 2 | 0 |
| APR/MAY/JUNE | 0 | 0 | 0 |

| Members | | | |
|-----------------------|--|--|--|
| RESULTS FOR 2016-2017 | | | |
| QUARTER | NEW MEMBER GROWTH NET GOAL (not reinstated or transfers) | NEW MEMBER GROWTH ACTUAL (not reinstated or transfers) | DROPPED MEMBERS ACTUAL (including transfers) |
| JULY/AUG/SEPT | -75 | 55 | 105 |
| OCT/NOV/DEC | 90 | 44 | 74 |
| JAN/FEB/MAR | 20 | 138 | 86 |
| APR/MAY/JUNE | 15 | 35 | 22 |

GOALS AND ACTUAL NEW CLUBS CUMULATIVE



GOALS AND ACTUAL MEMBERS CUMULATIVE



| | | | |
|------------------|--|---------------------------------|----------------|
| DROPPED CLUBS: 1 | 43 CLUBS OF 63 ADDED 1 OR MORE NEW MEMBERS | <u>GENDER DISTRIBUTION</u> | |
| DROPPED MEMBERS | | MALE | 1,226 (67.14%) |
| DECEASED | 16 | FEMALE | 600 (32.86%) |
| CLUB CANCELLED | 4 | TOTAL FAMILY UNIT MEMBERS | 310 |
| OTHER | 267 | FAMILY MEMBERS PAYING HALF DUES | 161 |
| TOTAL | 287 | | |

[CLICK HERE FOR CUMULATIVE MEMBERSHIP DATA](#)